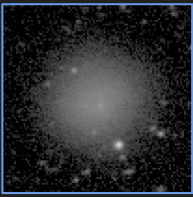
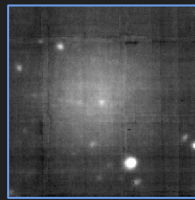


Dwarf Properties and Satellite Planes Beyond the Local Volume



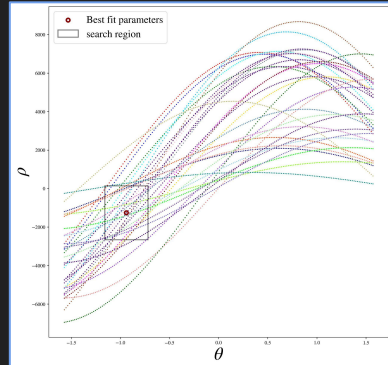
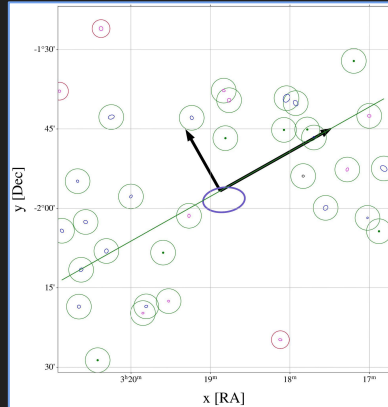
Habas et al. 2020



Planes of satellites: statistical outlier or common phenomenon?

MATLAS survey:

- 2210 dwarf galaxies identified in the MATLAS fields
- 2D analysis → initially no distance estimate for most dwarfs (~85%)
- PoS candidates in 26% of the fields
- Majority with dimensions between LG and the Cen A planes



VLT/MUSE follow-up:

- 56 MATLAS dwarfs observed with MUSE
 - Gain line-of-sight velocity information
 - Confirm dwarf & satellite nature
- 75% are satellites of massive ATLAS^{3D} galaxies
- Not enough dwarfs with spectroscopic data per system → no information about PoS
- Stellar populations: systematic deviation from the universal stellar mass-metallicity relation (Kirby+2013)

